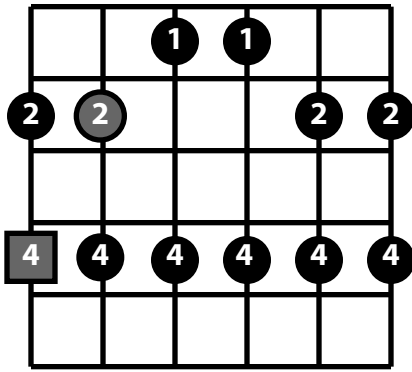
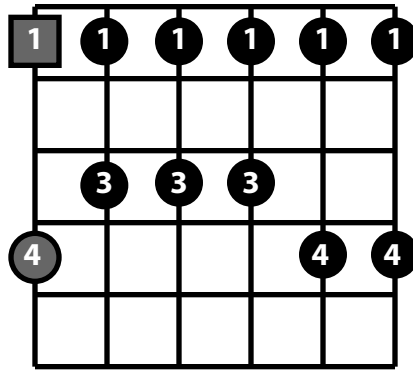


Movable Pentatonic Scales (Box Patterns)

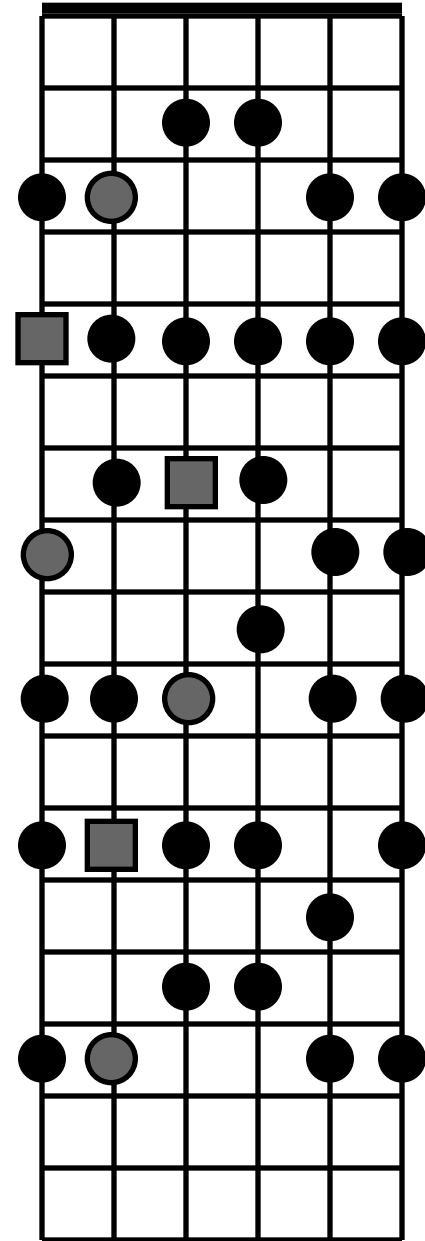
Form 1



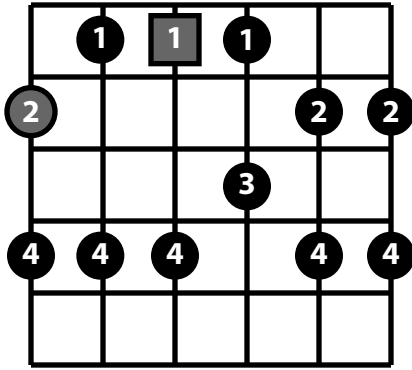
Form 2



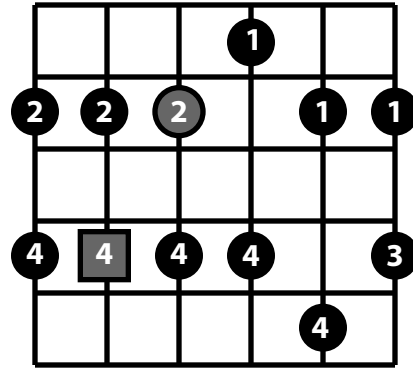
Connected Forms



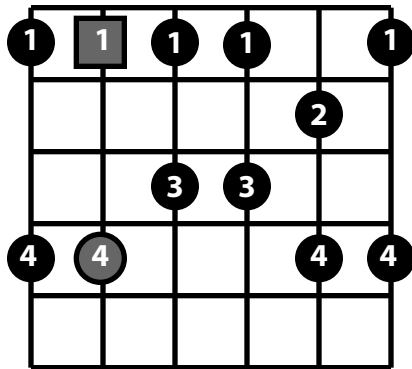
Form 3





Form 4



Form 5



minor root = 
 major root = 

There are several methods for connecting one pattern to the next:

1. Enharmonic. The same note played or written differently. One string down, and five frets up, from the last root.
2. Octave. The same note eight major scale degrees higher. "Two up, two over" - two frets up, two strings up, from the last root.
3. "Swap". Simply put the new root finger on the last root.